

Herbert Hoover Elem School

Schaumburg CCSD 54

Schaumburg, ILLINOIS



ILLINOIS SCHOOL REPORT CARD

GRADES : PK K 1 2 3 4 5 6

State and federal laws require public school districts to release report cards to the public each year.

Starting in 2009, charter school information is included in district statistics.

STUDENTS

RACIAL/ETHNIC BACKGROUND AND OTHER INFORMATION

	White	Black	Hispanic	Asian	Native Hawaiian /Pacific Islander	American Indian	Two or More Races	Percent Low-Income	Percent Limited-English-Proficient	Percent IEP	High Sch. Dropout Rate	Chronic Truancy Rate	Mobility Rate	Attendance Rate	Total Enrollment
School	55.8	3.6	7.1	31.0	0.0	0.0	2.5	3.6	10.9	8.2		0.0	11.1	96.4	439
District	46.3	6.5	22.5	20.0	0.6	0.8	3.3	18.3	17.5	11.3		0.3	10.8	95.6	14,318
State	51.4	18.3	23.0	4.1	0.1	0.3	2.8	48.1	8.8	14.0		3.2	12.8	94.0	2,074,806

Low-income students come from families receiving public aid; live in institutions for neglected or delinquent children; are supported in foster homes with public funds; or are eligible to receive free or reduced-price lunches.

IEP Students are those students eligible to receive special education services.

Limited-English-proficient students are those students eligible for transitional bilingual programs.

Mobility rate is based on the number of times students enroll in or leave a school during the school year.

Chronic truants are students who are absent from school without valid cause for 18 or more of the last 180 school days.

Total Enrollment is based on Home School.

INSTRUCTIONAL SETTING

PARENTAL CONTACT*		STUDENT-TO-STAFF RATIOS			
	Percent	Pupil-Teacher Elementary	Pupil-Teacher Secondary	Pupil-Certified Staff	Pupil-Administrator
School	99.0	--	--	--	--
District	99.3	16.5		11.9	228.8
State	96.0	18.8		13.6	211.3

* Parental contact includes parent-teacher conferences, parental visits to school, school visits to home, telephone conversations, and written correspondence.

AVERAGE CLASS SIZE (as of the first school day in May)

Grades	K	1	2	3	4	5	6	7	8	9 - 12
School	21.0	20.0	18.7	22.0	17.3	21.3	26.0			
District	19.3	20.6	20.1	20.3	20.3	21.2	21.6			
State	20.9	21.6	21.8	22.3	22.9	23.3	22.0			

TIME DEVOTED TO TEACHING CORE SUBJECTS (Minutes Per Day)

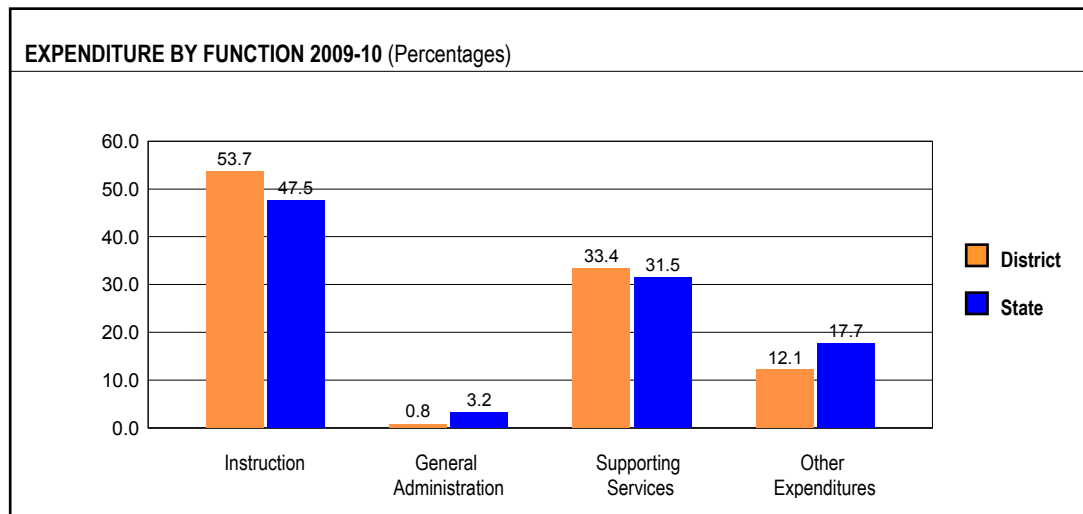
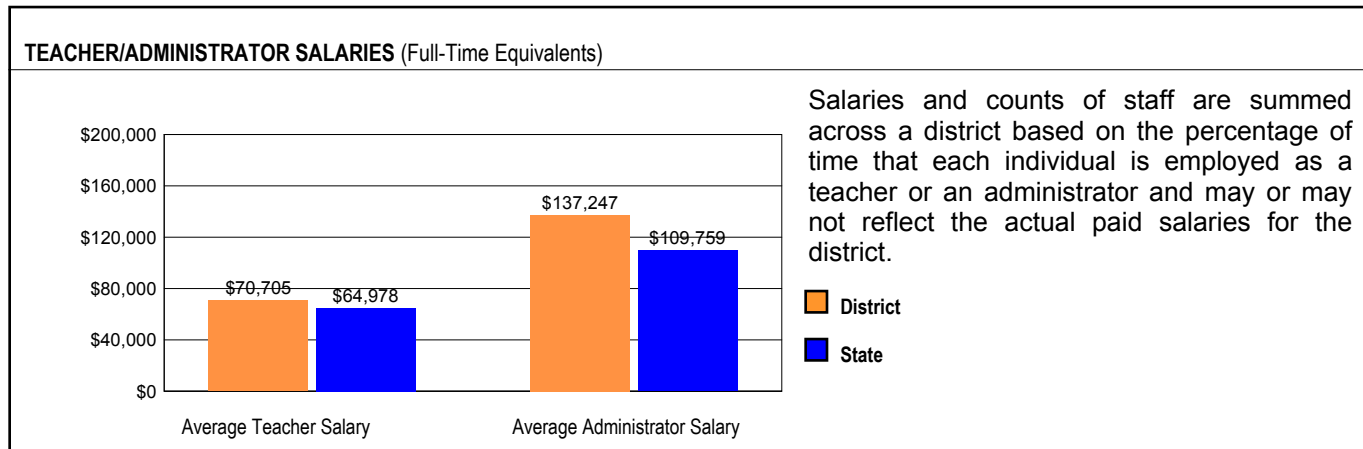
Grades	Mathematics			Science			English/Language Arts			Social Science		
	3	6	8	3	6	8	3	6	8	3	6	8
School	55	65		30	45		170	130		30	45	
District	57	62		30	44		166	133		30	46	
State	60	55		30	43		143	103		30	43	

TEACHER INFORMATION (Full-Time Equivalents)											
	White	Black	Hispanic	Asian	Native Hawaiian/ Pacific islander	American Indian	Two or More Races	Unknown	Male	Female	Total Number
District	85.0	1.2	2.3	3.8	0.0	0.1	6.6	1.1	10.7	89.3	1,015
State	82.4	6.1	5.0	1.2	0.1	0.1	0.7	4.3	23.1	76.9	128,262

TEACHER INFORMATION (Continued)					
	Average Teaching Experience (Years)	% of Teachers with Bachelor's Degrees	% of Teachers with Master's & Above	% of Teachers with Emergency or Provisional Credentials	% of Classes Not Taught by Highly Qualified Teachers
School	--	--	--	0.0	0.0
District	12.3	38.8	61.2	0.7	0.0
State	13.2	39.5	60.4	0.6	0.8

Some teacher/administrator data are not collected at the school level.

SCHOOL DISTRICT FINANCES



REVENUE BY SOURCE 2009-10				EXPENDITURE BY FUND 2009-10			
	District	District %	State %		District	District %	State %
Local Property Taxes	\$154,523,870	82.9	58.9	Education	\$140,252,431	75.0	72.9
Other Local Funding	\$5,254,441	2.8	6.4	Operations & Maintenance	\$14,946,553	8.0	6.0
General State Aid	\$5,084,146	2.7	14.9	Transportation	\$10,013,908	5.4	3.8
Other State Funding	\$9,559,395	5.1	7.5	Debt Service	\$8,773,875	4.7	7.2
Federal Funding	\$11,942,570	6.4	12.4	Tort	\$0	0.0	1.2
TOTAL	\$186,364,422			Municipal Retirement/ Social Security	\$5,629,278	3.0	1.9
				Fire Prevention & Safety	\$1,762,604	0.9	0.7
				Site & Construction/ Capital Improvement	\$5,730,112	3.1	6.4
				TOTAL	\$187,108,761		

OTHER FINANCIAL INDICATORS				
	2008 Equalized Assessed Valuation per Pupil	2008 Total School Tax Rate per \$100	2009-10 Instructional Expenditure per Pupil	2009-10 Operating Expenditure per Pupil
District	\$482,322	2.56	\$7,881	\$12,530
State	**	**	\$6,773	\$11,537

** Due to the way Illinois school districts are configured, state averages for equalized assessed valuation per pupil and total school tax rate per \$100 are not provided.

Equalized assessed valuation includes all computed property values upon which a district's local tax rate is calculated.

Total school tax rate is a district's total tax rate as it appears on local property tax bills.

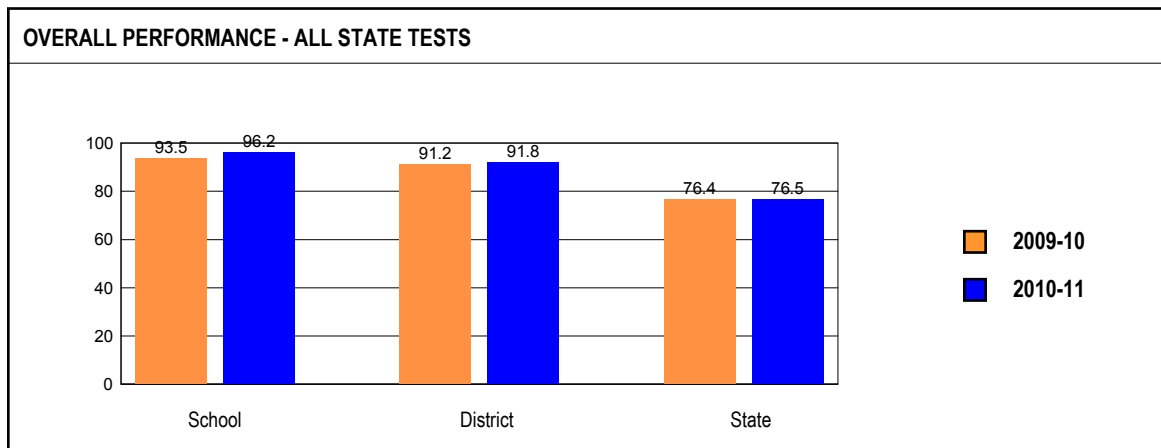
Instructional expenditure per pupil includes the direct costs of teaching pupils or the interaction between teachers and pupils.

Operating expenditure per pupil includes the gross operating cost of a school district excluding summer school, adult education, bond principal retired, and capital expenditures.

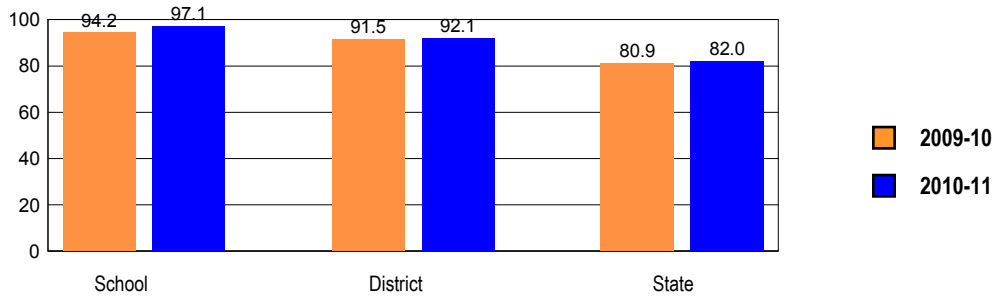
ACADEMIC PERFORMANCE

OVERALL STUDENT PERFORMANCE

These charts present the overall percentages of state test scores categorized as meeting or exceeding the Illinois Learning Standards for your school, district, and the state. They represent your school's performance in reading, mathematics, and science.

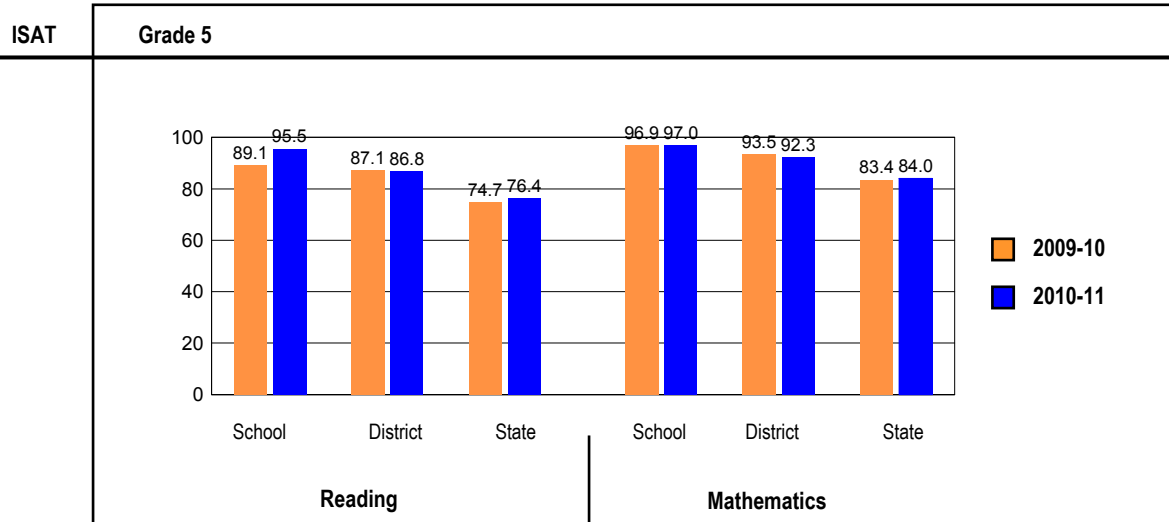
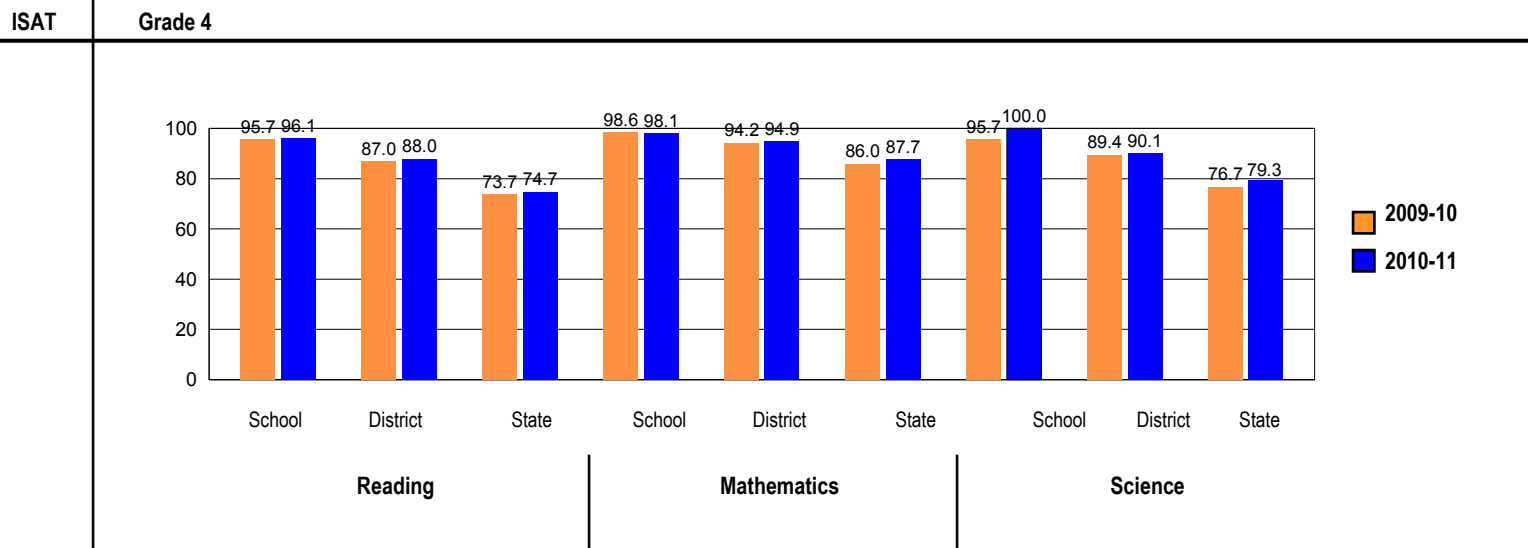
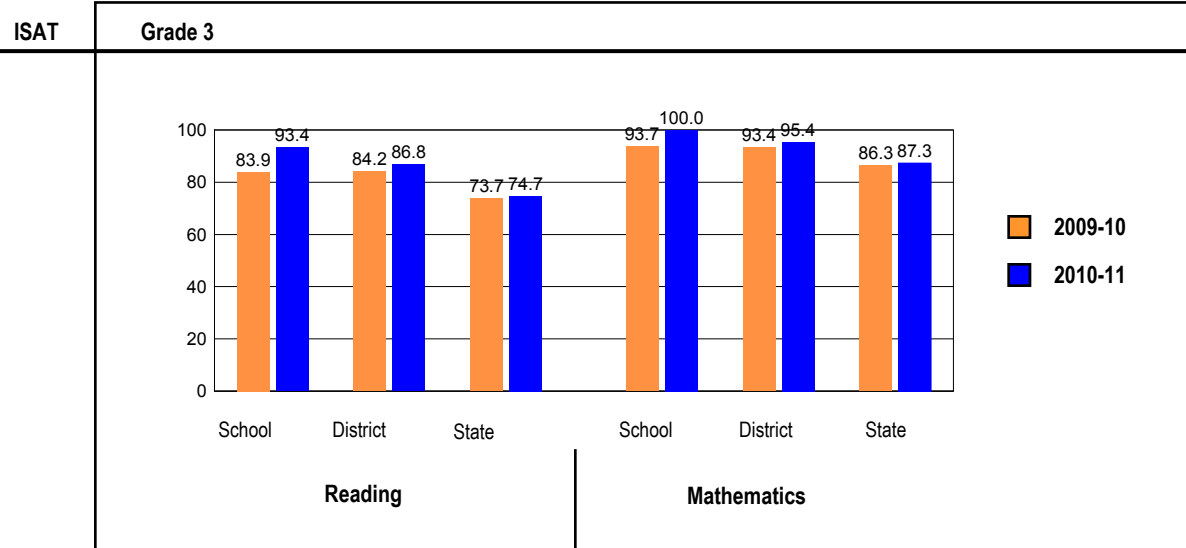


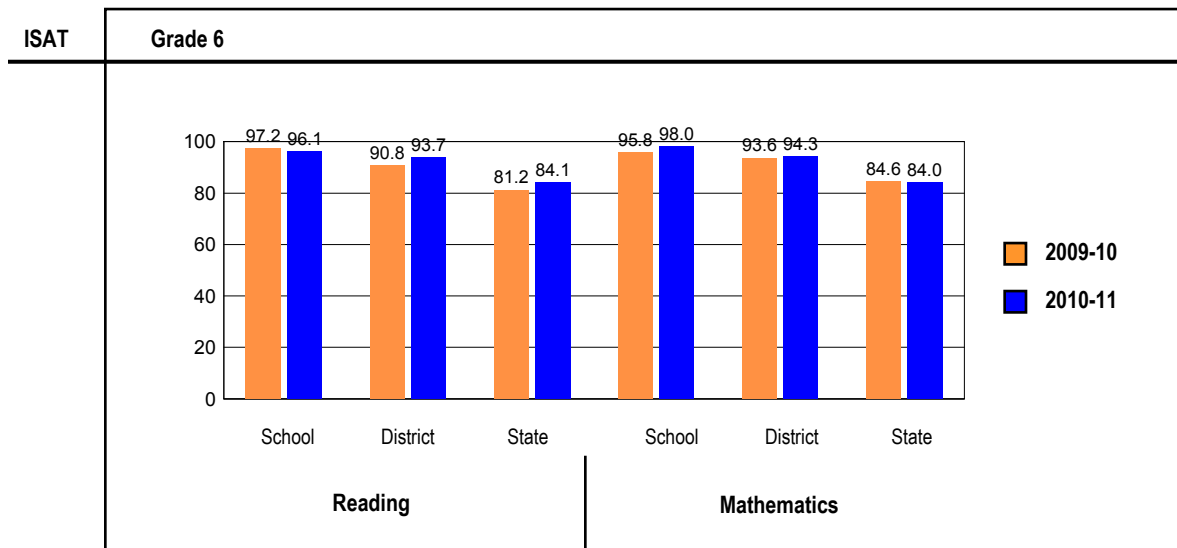
OVERALL ILLINOIS STANDARDS ACHIEVEMENT TEST (ISAT) PERFORMANCE



ISAT PERFORMANCE

These charts provide information on attainment of the Illinois Learning Standards. They show the percents of student scores meeting or exceeding Standards for the grades and subjects tested on ISAT.





PERFORMANCE ON STATE ASSESSMENTS

Federal law requires that student achievement results for reading, mathematics, and science for schools providing Title I services be reported to the general public.

The Illinois Standards Achievement Test (ISAT) is administered to students in grades 3 through 8. The Prairie State Achievement Examination (PSAE) is administered to students in grade 11. The Illinois Alternate Assessment (IAA) is administered to students with disabilities whose Individualized Education Programs (IEPs) indicate that participation in the ISAT or PSAE would not be appropriate.

Students with disabilities have an IEP (No Child Left Behind Act). An IEP is a written plan for a child with a disability who is eligible to receive special education services under the Individuals with Disabilities Education Act.

Reading and Mathematics are tested in grades 3 through 8 and 11. Science is tested in grades 4, 7, and 11.

In order to protect students' identities, test data for groups of fewer than ten students are not reported.

PERCENTAGE OF STUDENTS NOT TESTED IN STATE TESTING PROGRAMS FOR READING															
		Gender			Racial/Ethnic Background										
		All	Male	Female	White	Black	Hispanic	Asian	Native Hawaiian /Pacific islander	American Indian	Two or More Races	LEP	Migrant	Students with Disabilities	Economically Disadvantaged
School	*Enrollment	235	121	114	140	6	17	65	0	0	7	10	0	25	10
	Reading	0.0	0.0	0.0	0.0		0.0	0.0				0.0		0.0	0.0
District	*Enrollment	9,244	4,769	4,475	4,463	687	1,929	1,739	68	57	301	907	0	1,117	1,682
	Reading	0.1	0.1	0.1	0.1	0.1	0.0	0.2	0.0	0.0	0.0	0.0		0.0	0.1
State	*Enrollment	1,075,993	550,552	525,225	554,770	197,979	244,338	44,033	976	3,305	29,668	65,498	276	150,007	522,525
	Reading	0.5	0.5	0.4	0.4	0.7	0.3	0.9	0.5	0.5	0.4	0.7	0.4	0.9	0.5

* Enrollment as reported during the testing windows for grades 3 - 8 and 11.

Number of LEP Students who have attended schools in the U.S. for less than 12 months and are not assessed on the State's reading/language arts test: 3

PERCENTAGE OF STUDENTS NOT TESTED IN STATE TESTING PROGRAMS FOR MATHEMATICS															
		Gender			Racial/Ethnic Background							LEP	Migrant	Students with Disabilities	Economically Disadvantaged
		All	Male	Female	White	Black	Hispanic	Asian	Native Hawaiian/Pacific Islander	American Indian	Two or More Races				
School	*Enrollment	238	124	114	140	6	17	68	0	0	7	13	0	25	10
	Mathematics	0.0	0.0	0.0	0.0		0.0	0.0				0.0		0.0	0.0
District	*Enrollment	9,298	4,802	4,496	4,470	689	1,938	1,775	68	57	301	961	0	1,117	1,695
	Mathematics	0.1	0.1	0.1	0.0	0.3	0.3	0.1	0.0	0.0	0.0	0.1		0.2	0.2
State	*Enrollment	1,077,714	551,494	526,004	555,155	198,036	244,999	44,624	980	3,312	29,684	67,235	282	150,024	523,732
	Mathematics	0.4	0.5	0.4	0.4	0.7	0.3	0.7	0.4	0.5	0.4	0.4	0.4	0.9	0.5

* Enrollment as reported during the testing windows for grades 3 - 8 and 11.

PERCENTAGE OF STUDENTS NOT TESTED IN STATE TESTING PROGRAMS FOR SCIENCE															
		Gender			Racial/Ethnic Background							LEP	Migrant	Students with Disabilities	Economically Disadvantaged
		All	Male	Female	White	Black	Hispanic	Asian	Native Hawaiian/Pacific Islander	American Indian	Two or More Races				
School	*Enrollment	52	29	23	32	2	2	14	0	0	2	3	0	4	2
	Science	0.0	0.0	0.0	0.0			0.0							
District	*Enrollment	3,077	1,588	1,489	1,449	241	641	599	29	18	100	296	0	386	542
	Science	0.4	0.6	0.3	0.3	0.8	0.6	0.3	0.0	0.0	1.0	0.3		0.8	0.6
State	*Enrollment	460,543	234,564	225,880	241,336	84,536	101,176	19,148	441	1,439	12,080	23,708	123	63,609	214,960
	Science	0.8	0.9	0.7	0.6	1.3	0.7	1.5	0.7	0.8	0.7	0.7	0.0	1.4	0.9

* Enrollment as reported during the testing windows for grades 4, 7, and 11.

ILLINOIS STANDARDS ACHIEVEMENT TEST (ISAT)

The following tables show the percentages of student scores in each of four performance levels. These levels were established with the help of Illinois educators who teach the grade levels and learning areas tested. Due to rounding, the sum of the percentages in the four performance levels may not always equal 100.

- Level 1 -- Academic Warning - Student work demonstrates limited knowledge and skills in the subject. Because of major gaps in learning, students apply knowledge and skills ineffectively.
- Level 2 -- Below Standards - Student work demonstrates basic knowledge and skills in the subject. However, because of gaps in learning, students apply knowledge and skills in limited ways.
- Level 3 -- Meets Standards - Student work demonstrates proficient knowledge and skills in the subject. Students effectively apply knowledge and skills to solve problems.
- Level 4 -- Exceeds Standards - Student work demonstrates advanced knowledge and skills in the subject. Students creatively apply knowledge and skills to solve problems and evaluate the results.

Grade 3**Grade 3 - All**

Levels	Reading				Mathematics			
	1	2	3	4	1	2	3	4
School	1.6	4.9	39.3	54.1	0.0	0.0	15.6	84.4
District	2.4	10.8	47.3	39.5	0.6	4.0	34.2	61.2
State	5.8	19.5	47.6	27.1	2.9	9.8	43.2	44.1

Grade 3 - Gender

Levels	Reading				Mathematics				
	1	2	3	4	1	2	3	4	
Male	School	0.0	9.4	37.5	53.1	0.0	0.0	14.3	85.7
	District	3.6	11.9	47.0	37.6	0.7	3.2	31.5	64.6
	State	7.4	21.0	46.5	25.1	3.3	9.9	41.2	45.6
Female	School	3.4	0.0	41.4	55.2	0.0	0.0	17.2	82.8
	District	1.3	9.6	47.6	41.5	0.4	4.9	37.0	57.7
	State	4.2	17.8	48.8	29.2	2.4	9.8	45.2	42.6

Grade 3 - Racial/Ethnic Background

Levels	Reading				Mathematics				
	1	2	3	4	1	2	3	4	
White	School	0.0	3.1	43.8	53.1	0.0	0.0	12.5	87.5
	District	1.1	6.8	46.5	45.6	0.2	2.6	28.8	68.5
	State	2.6	12.3	48.2	37.0	1.1	4.9	37.2	56.8
Black	School								
	District	7.9	14.6	53.9	23.6	2.3	8.0	52.3	37.5
	State	10.8	28.6	47.3	13.2	7.3	18.8	51.0	22.9
Hispanic	School								
	District	5.8	18.9	52.1	23.2	1.5	7.9	52.3	38.4
	State	9.3	29.3	47.6	13.8	3.6	14.3	52.5	29.5
Asian	School	0.0	0.0	36.4	63.6	0.0	0.0	4.0	96.0
	District	0.7	8.1	42.6	48.5	0.0	1.4	19.8	78.8
	State	2.5	8.4	42.5	46.6	1.2	3.0	24.3	71.5
Native Hawaiian/Pacific Islander	School								
	District								
	State	2.7	14.4	46.8	36.0	0.0	4.4	40.7	54.9
American Indian	School								
	District	0.0	33.3	41.7	25.0	0.0	8.3	41.7	50.0
	State	7.1	21.7	51.8	19.4	3.2	12.4	45.8	38.5
Two or More Races	School								
	District	0.0	14.5	38.2	47.3	0.0	5.5	32.7	61.8
	State	3.9	16.8	47.2	32.0	1.8	8.7	42.2	47.4

Grade 4**Grade 4 - All**

Levels	Reading				Mathematics				Science			
	1	2	3	4	1	2	3	4	1	2	3	4
School	0.0	3.9	33.3	62.7	0.0	1.9	34.6	63.5	0.0	0.0	55.8	44.2
District	0.3	11.7	43.5	44.5	0.3	4.8	50.6	44.4	1.1	8.8	59.7	30.3
State	0.9	24.3	44.5	30.2	1.2	11.1	60.1	27.6	3.5	17.2	58.4	21.0

Grade 4 - Gender

Levels	Reading				Mathematics				Science				
	1	2	3	4	1	2	3	4	1	2	3	4	
Male	School	0.0	6.9	41.4	51.7	0.0	3.4	41.4	55.2	0.0	0.0	58.6	41.4
	District	0.5	12.3	48.2	39.0	0.4	4.5	49.3	45.9	1.1	7.7	59.9	31.3
	State	1.2	27.6	44.1	27.1	1.5	11.6	58.3	28.6	3.8	16.9	56.6	22.6
Female	School	0.0	0.0	22.7	77.3	0.0	0.0	26.1	73.9	0.0	0.0	52.2	47.8
	District	0.0	11.0	38.6	50.4	0.1	5.2	51.9	42.8	1.2	10.0	59.5	29.3
	State	0.6	21.0	44.9	33.5	0.9	10.5	61.9	26.7	3.1	17.5	60.2	19.2

Grade 4 - Racial/Ethnic Background

Levels	Reading				Mathematics				Science				
	1	2	3	4	1	2	3	4	1	2	3	4	
White	School	0.0	3.1	31.3	65.6	0.0	3.1	34.4	62.5	0.0	0.0	56.3	43.8
	District	0.0	6.8	42.1	51.1	0.2	3.4	46.6	49.8	0.3	4.6	59.9	35.2
	State	0.4	14.7	44.3	40.5	0.6	5.8	56.6	37.0	1.1	8.5	60.2	30.2
Black	School	1.1	27.7	44.7	26.6	0.0	15.8	67.4	16.8	3.2	19.1	71.3	6.4
	District	1.9	40.5	44.3	13.3	2.7	20.9	65.4	11.0	8.2	33.4	52.6	5.7
	State												
Hispanic	School	0.6	21.9	51.6	25.8	1.0	6.8	69.1	23.2	2.9	16.5	65.5	15.2
	District	1.3	35.3	46.4	16.9	1.6	16.1	67.1	15.3	5.4	25.3	59.7	9.7
	State												
Asian	School	0.0	7.7	23.1	69.2	0.0	0.0	21.4	78.6	0.0	0.0	42.9	57.1
	District	0.3	6.9	38.2	54.6	0.0	2.5	35.6	61.9	0.3	6.4	51.9	41.4
	State	0.4	10.4	37.3	52.0	0.6	3.8	41.2	54.3	2.0	7.8	53.1	37.2
Native Hawaiian/Pacific Islander	School												
	District												
	State	0.0	21.3	42.5	36.2	3.1	7.1	55.9	33.9	4.7	13.3	53.9	28.1
American Indian	School												
	District												
	State	1.1	32.7	43.7	22.4	1.4	13.0	66.4	19.2	3.7	22.2	58.8	15.3
Two or More Races	School												
	District	0.0	10.6	40.4	48.9	0.0	6.3	45.8	47.9	2.1	10.6	48.9	38.3
	State	0.9	19.6	44.2	35.3	0.9	10.5	57.1	31.5	1.9	14.6	58.8	24.6

Grade 5**Grade 5 - All**

Levels	Reading				Mathematics			
	1	2	3	4	1	2	3	4
School	0.0	4.5	37.3	58.2	0.0	3.0	40.3	56.7
District	0.1	13.0	46.3	40.6	0.0	7.7	56.6	35.7
State	0.4	23.2	49.1	27.3	0.5	15.5	64.6	19.4

Grade 5 - Gender

Levels	Reading				Mathematics				
	1	2	3	4	1	2	3	4	
Male	School	0.0	9.1	48.5	42.4	0.0	6.1	45.5	48.5
	District	0.2	16.1	47.5	36.1	0.0	7.7	56.8	35.5
	State	0.5	26.1	48.8	24.6	0.6	16.5	63.0	19.9
Female	School	0.0	0.0	26.5	73.5	0.0	0.0	35.3	64.7
	District	0.0	9.8	44.9	45.3	0.0	7.7	56.4	35.9
	State	0.2	20.1	49.4	30.2	0.4	14.5	66.3	18.8

Grade 5 - Racial/Ethnic Background

Levels	Reading				Mathematics				
	1	2	3	4	1	2	3	4	
White	School	0.0	4.7	44.2	51.2	0.0	2.3	48.8	48.8
	District	0.0	9.6	46.8	43.6	0.0	5.7	55.7	38.6
	State	0.2	13.7	49.8	36.3	0.2	8.9	64.9	25.9
Black	School								
	District	0.9	25.0	50.0	24.1	0.0	20.9	70.4	8.7
	State	0.8	38.5	48.3	12.4	1.3	29.5	62.5	6.6
Hispanic	School								
	District	0.3	22.6	50.8	26.3	0.0	12.8	68.0	19.2
	State	0.6	34.7	49.5	15.3	0.6	20.8	68.7	9.8
Asian	School	0.0	5.9	29.4	64.7	0.0	5.9	23.5	70.6
	District	0.0	7.5	40.2	52.3	0.0	3.5	40.3	56.2
	State	0.2	9.8	41.2	48.7	0.4	5.1	48.0	46.5
Native Hawaiian/Pacific Islander	School								
	District								
	State	0.0	13.3	49.2	37.5	0.0	10.8	58.5	30.8
American Indian	School								
	District								
	State	0.7	28.7	47.9	22.8	0.2	19.7	62.9	17.1
Two or More Races	School								
	District	0.0	8.3	41.7	50.0	0.0	1.7	68.3	30.0
	State	0.2	18.1	49.4	32.2	0.3	13.4	63.9	22.3

Grade 6**Grade 6 - All**

Levels	Reading				Mathematics			
	1	2	3	4	1	2	3	4
School	0.0	3.9	39.2	56.9	0.0	2.0	37.3	60.8
District	0.1	6.2	49.8	43.9	0.1	5.6	47.3	47.0
State	0.2	15.7	56.8	27.3	0.6	15.5	58.0	25.9

Grade 6 - Gender

Levels	Reading				Mathematics				
	1	2	3	4	1	2	3	4	
Male	School	0.0	3.8	38.5	57.7	0.0	0.0	34.6	65.4
	District	0.1	7.0	54.0	38.8	0.1	6.1	48.9	44.9
	State	0.3	19.1	57.1	23.5	0.7	16.8	56.2	26.3
Female	School	0.0	4.0	40.0	56.0	0.0	4.0	40.0	56.0
	District	0.0	5.4	45.3	49.4	0.1	5.1	45.6	49.2
	State	0.1	12.2	56.5	31.3	0.5	14.0	59.9	25.6

Grade 6 - Racial/Ethnic Background

Levels	Reading				Mathematics				
	1	2	3	4	1	2	3	4	
White	School	0.0	0.0	43.3	56.7	0.0	0.0	36.7	63.3
	District	0.0	3.2	45.1	51.7	0.1	3.2	44.2	52.5
	State	0.1	9.4	54.7	35.8	0.3	8.9	56.8	34.0
Black	School	0.0	16.8	69.9	13.3	0.0	19.5	61.1	19.5
	District	0.0	28.1	60.0	11.4	1.3	30.1	58.6	10.0
	State	0.4	28.1	60.0	11.4	1.3	30.1	58.6	10.0
Hispanic	School	0.3	10.5	65.1	24.0	0.3	8.9	63.7	27.1
	District	0.2	21.7	61.6	16.4	0.7	20.5	63.8	15.1
	State	0.2	21.7	61.6	16.4	0.7	20.5	63.8	15.1
Asian	School	0.0	9.1	18.2	72.7	0.0	0.0	27.3	72.7
	District	0.0	6.0	37.7	56.3	0.0	2.2	33.6	64.2
	State	0.1	6.0	41.5	52.4	0.2	4.7	38.4	56.6
Native Hawaiian/Pacific Islander	School								
	District								
	State	0.0	10.7	55.7	33.6	0.8	9.0	56.6	33.6
American Indian	School	0.0	0.0	54.5	45.5	0.0	9.1	45.5	45.5
	District	0.4	18.1	60.4	21.1	0.8	18.1	60.5	20.5
	State	0.4	18.1	60.4	21.1	0.8	18.1	60.5	20.5
Two or More Races	School	0.0	2.0	43.1	54.9	0.0	5.9	37.3	56.9
	District	0.1	12.9	55.1	31.8	0.4	13.3	57.1	29.1
	State	0.1	12.9	55.1	31.8	0.4	13.3	57.1	29.1

2011 ADEQUATE YEARLY PROGRESS (AYP) Status Report

Is this school making Adequate Yearly Progress (AYP)?	Yes	Has this school been identified for School Improvement according to the AYP specifications of the federal No Child Left Behind Act?	No
Is this school making AYP in Reading?	Yes	2011-12 Federal Improvement Status	
Is this school making AYP in Mathematics?	Yes	2011-12 State Improvement Status	

	Percent Tested on State Tests				Percent Meeting/Exceeding Standards *						Other Indicators			
	Reading		Mathematics		Reading			Mathematics			Attendance Rate		Graduation Rate	
	%	Met AYP	%	Met AYP	%	Safe Harbor Target **	Met AYP	%	Safe Harbor Target **	Met AYP	%	Met AYP	%	Met AYP
State AYP Minimum Target	95.0		95.0		85.0			85.0			91.0		82.0	
All	100.0	Yes	100.0	Yes	95.7		Yes	96.6		Yes	96.4	Yes		
White	100.0	Yes	100.0	Yes	97.0		Yes	96.2		Yes				
Black														
Hispanic														
Asian	100.0	Yes	100.0	Yes	96.2		Yes	98.1		Yes				
Native Hawaiian/ Pacific Islander														
American Indian														
Two or More Races														
LEP														
Students with Disabilities														
Economically Disadvantaged														

Four Conditions Are Required For Making Adequate Yearly Progress (AYP):

1. At least 95% tested in reading and mathematics for every student group. If the current year participation rate is less than 95%, this condition may be met if the average of the current and preceding year rates is at least 95%, or if the average of the current and two preceding years is at least 95%. Only actual participation rates are printed. If the participation rate printed is less than 95% and yet this school makes AYP, it means that the 95% condition was met by averaging.
2. At least 85% meeting/exceeding standards in reading and mathematics for every group. For any group with less than 85% meeting/exceeding standards, a 95% confidence interval was applied. Subgroups may meet this condition through Safe Harbor provisions. ***
3. At least 91% attendance rate for non-high schools and at least 82% graduation rate for high schools.

* Includes only students enrolled as of 05/01/2010.

** Safe Harbor Targets of 85% or above are not printed.

*** Subgroups with fewer than 45 students are not reported. Safe Harbor only applies to subgroups of 45 or more. In order for Safe Harbor to apply, a subgroup must decrease by 10% the percentage of scores that did not meet state standards from the previous year plus meet the other indicators (attendance rate for non-high schools and graduation rate for high schools) for the subgroup. For subgroups that do not meet their Safe Harbor Targets, a 75% confidence interval is applied. Safe Harbor allows schools an alternate method to meet subgroup minimum targets on achievement.

PLANNED IMPROVEMENT FOR THE SCHOOL AND DISTRICT

This is the final section of the school report card in which your school and district provide information below on areas of success and areas for planned improvement based on your school's improvement plan.

Based on our local assessment results from the 2010-2011 school year, the principal, School Leadership Team and the teaching staff of the Hoover Math & Science Academy have targeted this area for improvement for the 2011-2012 school year:

Literacy**Goals for the 2011-2012 School Year**

1. 95% of all third- through sixth-grade students will meet or exceed standards as measured by the reading portion of the 2012 Illinois Standards Achievement Test (ISAT).
2. 90% of students with individualized education plans (IEP) in third through sixth grade will score in the meets or exceeds categories as measured by the reading portion of the 2012 ISAT.
3. 80% of students will meet their target growth by the spring Measures of Academic Progress (MAP) assessment.

Objectives

By working toward the following specific objectives, we will be able to measure how well we have met our goals:

1. Instructional staff will continue to analyze our MAP assessment data throughout the course of the school year.
2. Instructional staff will continue to develop and support effective writing practices.
3. Instructional staff will focus on collaborating as a Professional Learning Community and developing common assessments.
4. Guided Math will be implemented at our school.

Hoover's School Leadership Team (SLT) is a group of parents, instructional staff members and administrators who work to lead our improvement efforts. Each year, the SLT reviews standardized and local assessment data from the current school year and trends over the past few years to identify focus areas for staff development and classroom instruction.

If you have any questions or suggestions about any of the information contained on this page of your School Report Card, please contact the principal.

Principal: Jake Chung

Phone Number: (847) 357-5800